

# ARCHALP

Rivista internazionale di architettura e paesaggio alpino / Revue internationale d'architecture et de paysage dans les Alpes / Internationale Zeitschrift für Alpine Architektur und Landschaft / Revija za alpsko arhitekturo in pokrajino / International journal of alpine architecture and landscape

---

## Infrastrutture culturali nelle Alpi. Il progetto tra pedagogia e sviluppo locale

Infrastructures culturelles dans les Alpes. Le projet entre pédagogie et développement local / Kulturelle Infrastrukturen in den Alpen. Das Projekt zwischen Pädagogik und lokaler Entwicklung / Kulturna infrastruktura v Alpah. Projekt med pedagogiko in lokalnim razvojem / Cultural infrastructures in the Alps. The project between pedagogy and local development



# ARCHALP

Rivista internazionale di architettura e paesaggio alpino / Revue internationale d'architecture et de paysage dans les Alpes / Internationale Zeitschrift für Alpine Architektur und Landschaft / Revija za alpsko arhitekturo in pokrajino / International journal of alpine architecture and landscape



# ARCHALP

Rivista internazionale di architettura e paesaggio alpino / Revue internationale d'architecture et de paysage dans les Alpes / Internationale Zeitschrift für Alpine Architektur und Landschaft / Revija za alpsko arhitekturo in pokrajino / International journal of alpine architecture and landscape

**Nuova serie** / New series: n.13

**Anno** / Year: 12-2024

**Rivista del Centro di Ricerca** / Journal of the Research center

**Istituto di Architettura Montana – IAM**

ISBN 979-12-5477-571-4

ISBN online 979-12-5477-572-1

ISSN stampa 2611-8653

ISSN online 2039-1730

DOI 10.30682/aa2413

Registrato con il numero 19/2011 presso il Tribunale di Torino in data 17/02/2011

Associato all'Unione Stampa Periodica Italiana

Copyright © Authors 2024 and Politecnico di Torino

CC BY 4.0 License

**Direttore responsabile** / Chief editor: Enrico Camanni

**Direttore scientifico** / Executive director: Antonio De Rossi

**Coordinatore editoriale** / Editorial coordinator: Roberto Dini

**Comitato editoriale** / Editorial board: Antonio De Rossi, Cristian Dallere, Roberto Dini,

Federica Serra, Matteo Tempestini

**Art Direction**: Marco Bozzola

**Segreteria di redazione** / Editorial office: Antonietta Cerrato

**Comitato scientifico** / Advisory board:

**Werner Bätzing** (Friedrich-Alexander-Universität Erlangen-Nürnberg);

**Gianluca Cepollaro** (Scuola del Governo del Territorio e del Paesaggio - Trentino School

of Management); **Giuseppe Dematteis** (Dipartimento Interateneo di Scienze, Progetto

e Politiche del Territorio - Politecnico di Torino); **Maja Ivanic** (Dessa Gallery - Ljubljana);

**Michael Jakob** (Haute école du paysage, d'ingénierie et d'architecture de Genève,

Politecnico di Milano, Accademia di Architettura di Mendrisio - Università della Svizzera

italiana); **Luigi Lorenzetti** (Laboratorio di Storia delle Alpi, Accademia di Architettura di

Mendrisio - Università della Svizzera italiana); **Paolo Mellano** (Dipartimento di Architettura

e Design - Politecnico di Torino); **Gianpiero Moretti** (École d'Architecture de Laval -

Québec); **Luca Orтели** (École Polytechnique Fédérale de Lausanne); **Armando Ruinelli**

(Architetto FAS - Soglio/Grigioni); **Bettina Schlorhauser** (Universität Innsbruck);

**Daniel A. Walser** (Fachhochschule Graubünden); **Alberto Winterle** (Turris Babel);

**Bruno Zanon** (Università di Trento, Scuola per il Governo del Territorio e del Paesaggio -

Trentino School of Management).

**Corrispondenti scientifici** / Scientific Correspondents:

**Giorgio Azzoni, Corrado Binel, Francesca Bogo, Nicola Braghieri, Carlo Calderan,**

**Conrandin Clavuot, Simone Cola, Federica Corrado, Massimo Crotti, Davide Del**

**Curto, Arnaud Dutheil, Viviana Ferrario, Caterina Franco, Luca Gibello, Stefano**

**Girodo, Silvia Lanteri, Gianluca d'Inca Levis, Verena Konrad, Laura Mascino,**

**Andrea Membretti, Giacomo Menini, Martina Motta, Marco Piccolroaz, Gabriele**

**Salvia, Enrico Scaramellini, Marion Serre, Daniel Zwangsleitner.**

**Progetto grafico** / Graphic design: Marco Bozzola e Flora Ferro

**Impaginazione** / Layout: DoppioClickArt, San Lazzaro di Savena, BO

**Stampa** / Print: PressUp (Roma)

**Curatori** / Theme editors: Federica Serra

**Ringraziamenti** / Thanks to: Roland Baldi, Michel Carlana

**Copertina** / Cover: Stifter + Bachmann and CeZ Architetti - Association Building Scaleres -

Scaleres, Alto-Adige, Italy, 2017 (photo Oliver Jaist)

**Errata corrige**

Nel numero 12-2024, nella scheda progetto a p. 90 si precisa che i progettisti sono gli architetti Dario Castellino e Valeria Cottino. Ci scusiamo con gli autori e i lettori / In No. 12-2024 issue of Archalp, in the project sheet on p. 90 we point out that the designers are architects Dario Castellino and Valeria Cottino. We sincerely apologise to the authors and our readers.

ArchAlp è pubblicata semestralmente e inviata in abbonamento postale.

Abbonamento cartaceo annuale (2 numeri): € 50,00, spese di spedizione per l'Italia incluse.

Il prezzo del singolo fascicolo è di € 28,00. Non sono incluse nel prezzo le spese di spedizione per il singolo

fascicolo per l'estero (€ 10,00).

Per abbonamenti istituzionali si prega di scrivere a ordini@buponline.com.

È possibile pagare la tariffa con bonifico bancario intestato a Bologna University Press, IBAN:

IT 90P03069 02478 074000053281 oppure con carta di credito.

Variazioni di indirizzo devono essere comunicate tempestivamente allegando l'etichetta con il precedente indirizzo. L'invio dei fascicoli non pervenuti avviene a condizione che la richiesta giunga entro 3 mesi dalla data della pubblicazione.

Per informazioni e acquisti: ordini@buponline.com.

A norma dell'articolo 74, lettera c del DPR 26 ottobre 1972, n. 633 e del DM 28 dicembre 1972, il pagamento dell'IVA, assolto dall'Editore, è compreso nel prezzo dell'abbonamento o dei fascicoli separati, pertanto non verrà rilasciata fattura se non su specifica richiesta.



**Politecnico di Torino**

Dipartimento di Architettura e Design

Dipartimento di Architettura e Design  
Politecnico di Torino  
Viale Mattioli 39, 10125 Torino - Italy  
Tel. (+39) 0110905806  
fax (+39) 0110906379  
iam@polito.it  
www.polito.it/iam

**Fondazione Bologna University Press**

Via Saragozza 10, 40124 Bologna - Italy  
Tel. (+39) 051232882  
info@buponline.com  
www.buponline.com

# ARCHALP

Rivista internazionale di architettura e paesaggio alpino / Revue internationale d'architecture et de paysage dans les Alpes / Internationale Zeitschrift für Alpine Architektur und Landschaft / Revija za alpsko arhitekturo in pokrajino / International journal of alpine architecture and landscape

---

Nuova serie / *New series* n. 13 - 2024

## **Infrastrutture culturali nelle Alpi. Il progetto tra pedagogia e sviluppo locale**

Infrastructures culturelles dans les Alpes. Le projet entre pédagogie et développement local / Kulturelle Infrastrukturen in den Alpen. Das Projekt zwischen Pädagogik und lokaler Entwicklung / Kulturna infrastruktura v Alpah. Projekt med pedagogiko in lokalnim razvojem / Cultural infrastructures in the Alps. The project between pedagogy and local development



# Indice dei contenuti

## Contents

<b>Infrastrutture culturali nelle Alpi. Il progetto tra pedagogia e sviluppo locale</b> / Cultural infrastructures in the Alps. The project between pedagogy and local development <i>Federica Serra</i>	<b>8</b>
<b>Spazi culturali che costruiscono la nuova montagna</b> / Cultural spaces that shape the contemporary mountain <i>Antonio De Rossi, Federica Serra</i>	<b>11</b>
<b>Cultures of the Alps: the intersection of sectors as the main tool for future</b> <i>Boris Previšić</i>	<b>15</b>
<b>Le infrastrutture immateriali per la rigenerazione dei territori nelle aree interne</b> / Immaterial infrastructures for the regeneration of territories in inland areas <i>Filippo Tantillo</i>	<b>23</b>
<hr/>	
<b>1. Cultura e sviluppo locale</b>	
<b>L'architettura dei Luoghi Comuni: un dialogo con Carlana Mezzalira Pentimalli</b> / The architecture of Common Places: a dialogue with Carlana Mezzalira Pentimalli <i>Edited by Federica Serra</i>	<b>29</b>
<b>Infrastrutturazioni culturali nella montagna contemporanea</b> / Cultural infrastructures in the contemporary mountain <i>Antonio De Rossi, Laura Mascino, Federica Serra, Matteo Tempestini</i>	<b>43</b>
<b>Contemporary experiences between culture and music</b> <i>Edited by Federica Serra</i>	<b>49</b>
<b>Abitare nelle Culture dei Luoghi. Lo spazio-paese di Vione come dispositivo che produce cultura</b> / Dwelling within the Cultures of Places. The Vione space-village as a producer of culture <i>Giorgio Azzoni</i>	<b>77</b>

<b>Il Progetto infinito. Un diario di Lou Pourtoun - Centro civico e culturale</b> / The infinite project. A diary of Lou Pourtoun - Civic and cultural centre <i>Laura Cantarella</i>	<b>85</b>
<b>Regeneration and community in socio-cultural spaces</b> <i>Edited by Federica Serra</i>	<b>93</b>
<hr/>	
<b>2. Educazione e pedagogia</b>	
<b>Due Case dei bambini di Aurelio Galfetti, 1960-1966</b> / Two Kindergartens by Aurelio Galfetti, 1960-1966 <i>Nicola Navone</i>	<b>109</b>
<b>Necessarie connessioni: apprendimento, spazi dell'educazione e territorio</b> / Required connections: learning, educational spaces and places <i>Gianluca Cepollaro</i>	<b>119</b>
<b>Flessibilità e identità negli spazi educativi: intervista a Roland Baldi</b> / Flexibility and identity in educational spaces: an interview with Roland Baldi <i>Edited by Federica Serra</i>	<b>125</b>
<b>Pedagogy and architecture in educational spaces</b> <i>Edited by Federica Serra</i>	<b>137</b>









# Pedagogy and architecture in educational spaces

*Edited by Federica Serra*

The projects selected in this review aim to illustrate the relationship between pedagogy and architecture in contemporary experiences across the Alpine territory. The buildings, located in France, Switzerland, Austria, and Italy, showcase an evolving relationship between traditional learning spaces and hybrid, multifunctional environments interconnected with the outdoors. This integration fosters innovative forms of experiential and social education, transforming pathways and common areas into places for intergenerational interaction and exchange.

Study rooms are designed to be dynamic and adaptable, maintaining strong visual and physical connections with other spaces within buildings. Additionally, contemporary experimentation extends to active learning and physical activity areas, emphasising both their incorporation into unified architectural designs and their thoughtful addition to pre-existing structures.

**MoDusArchitects**  
**Pedevilla Architects**  
**ateliers O-S architectes**  
**Comamala Ismail**  
**Atelier Jordan**  
**feld72**  
**Walter Pircher Architekt**  
**ES-arch enricoscaramelliniarchitetto**  
**Andrea D'Affronto**  
**Carlos Latorre**

**Opening picture**  
ateliers O-S architectes, Extension des  
équipements scolaires de Lugrin, Lugrin,  
Haute-Savoie, France, 2020 (photo Cyrille  
Weiner).

Doi: 10.30682/aa2413p

**MoDusArchitects**

# Tartan School

**Location:**

Terlan/Terlano, Alto Adige, Italy

**Chronology:**

2023

**Project category:**

Education

**Photos:**

Marco Cappelletti



Originally built in the 1990s as a U-shaped structure, the building was adapted in the early 2000s to accommodate multiple functions. In response to demographic growth, the local administration opted for an expansion, integrating new spaces for a kindergarten, nursery, and youth centre.

The design, blending with the surrounding vineyards and historic elements like the church and castle, optimises resources by sharing common spaces among the three educational programs. The distribution of the plan and the different heights create distinct areas, with separate entrances for the nursery and kin-

dergarten, and a youth centre entry at a lower level. The new addition houses classrooms, dining areas, and a gym, with a shared space for public events.

The building features a Tartan-inspired façade, with green tones and textured plaster, complemented by large windows and trapezoidal cuts that create a dynamic interaction between interior and exterior. The school's courtyard connects directly to the public playground, encouraging interaction between the school and the community. The design emphasises sustainability, earning the "CasaClima A" certification.

**Fig. 1**  
Aerial view of  
Terlano, North/East  
perspective.

**Fig. 2**  
Exterior, South  
Elevation, New  
building and  
playground.







**Fig. 3**  
Longitudinal section.



**Fig. 4**  
Kindergarten,  
Basement, Gym.

**Fig. 5**  
Kindergarten, First  
Floor, Group activity  
room.



**Pedevilla Architects**

# Frastanz-Hofen Education Centre

**Location:**

Frastanz, Vorarlberg, Austria

**Chronology:**

2021

**Project category:**

Education

**Photos:**

Gustav Willeit



The Frastanz-Hofen Education Center was developed as a shared space for childcare, kindergarten, and elementary education. Based on an existing school building, which was renovated and restructured, four new units were added to expand its volume and teaching spaces. The design creates quiet areas for individual learning groups, while a central plaza serves as a meeting space for students, kindergarten children, and parents. The centre also includes sports halls, workshops, and music rooms, used by local associations and the community.

The pedagogical concept emphasizes a smooth transition from kindergarten to elementary school, supporting children from 1.5 to 10 years old. Shared spaces act as hubs, gathering children before they move to their learning areas, while parents use these zones socially. A meeting area is also available for teachers. Natural, locally sourced materials create a welcoming atmosphere, promoting a sense of home and community. Hand-finished lime plaster with local aggregates, untreated spruce, and maple wood foster community identity and long-term social acceptance.

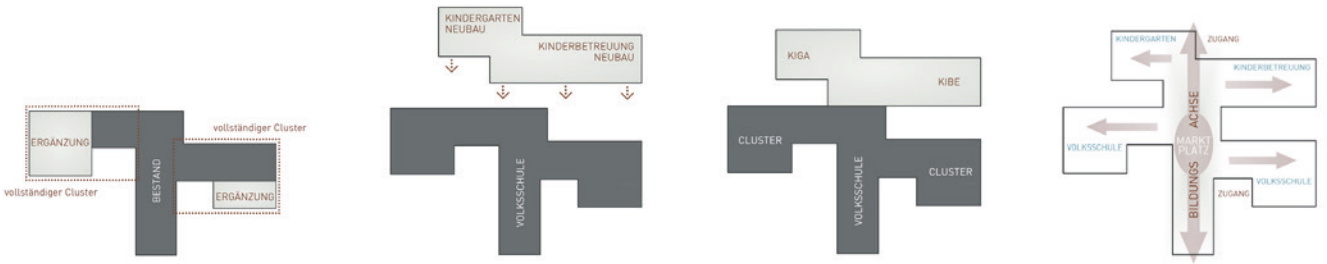


**Fig. 1**

External view of the building from North.

**Fig. 2**

External view of the West elevation.



4



5

Fig. 3  
Architectural  
concept.

Figs. 4-5  
Internal view of a  
classroom.



ateliers O-S architectes

# Extension of the educational facilities in Lugrin

**Location:**

Lugrin, Haute-Savoie, France

**Chronology:**

2020

**Project category:**

Education

**Photos:**

Cyrille Weiner



The school complex in Lugrin, situated between an 1850 girls' school and a 1950s boys' school, has undergone three extensions to accommodate its growing population. The latest extension adds a new block with half-board facilities, a courtyard, four rooms (including three elementary classrooms and a visual arts room), and common areas.

The building blends with the land's topography, with volumes placed at half-levels to fit the slope. The new structure, made of Corten steel is anchored by a rough concrete base and stands out against the surrounding architecture. The upper

floor houses the catering area, and the basement contains classrooms. Inspired by the local barn archetype, the building features a double-pitched roof and rust colour, harmonising with the landscape. The project's "breadcrumb trail" is a covered gallery that connects the new block to the existing school, fostering interaction and providing a courtyard for breaks. The design uses a concrete frame, pine battens, timber frame facades and Corten steel envelope chosen for their rationality, simplicity of lines, and precision of design, whilst respecting a tight budget and environmental lightness.

**Fig. 1**  
External view of the South elevation.

**Fig. 2**  
External view of the courtyard.

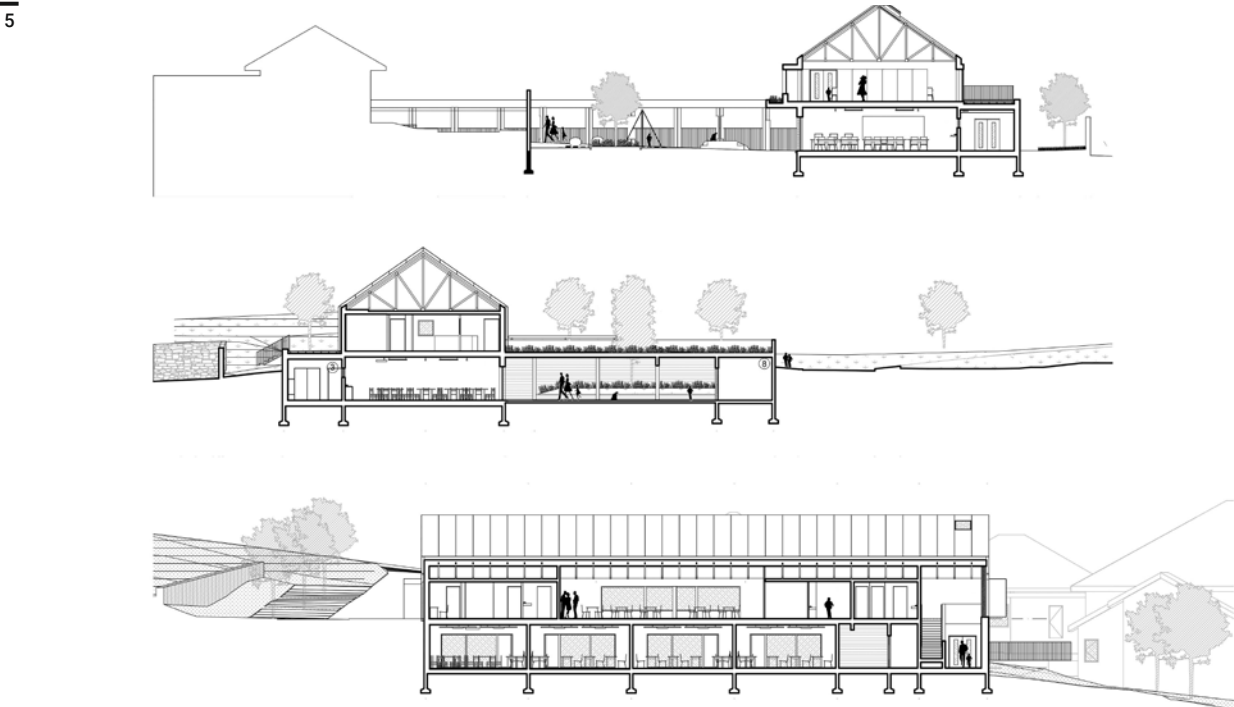
**Fig. 3**  
Detail of the porches.

**Fig. 4**  
Internal view of the classroom.

**Fig. 5**  
Sections.









**Comamala Ismail  
and Atelier Jordan**

# Expansion of the school campus

**Location:**

Grimisuat, Valais, Switzerland

**Chronology:**

2019

**Project category:**

Education

**Photos:**

Adrien Barakat



Several municipalities in the canton of Valais have seen their population grow in recent years. Fast connections to service centres and a high quality of life have made these communities very attractive.

At an altitude of 880 m, the commune of Grimisuat, located on the sunny side of the Alps and ten minutes from the city of Sion, needs to expand its school infrastructure. In addition to classrooms, the building program includes a library, a meeting room for 300 people, storage space for the municipal archives

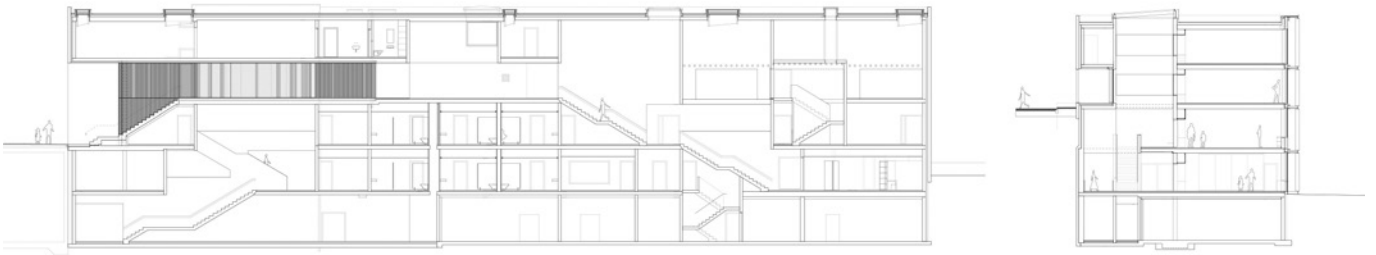
and changing rooms for outdoor sports activities. The school extension is the result of an open architectural competition held in 2014. The jury appreciated the precision of how the new building fits into the steep natural slope of the site, and its ability to link the various outdoor spaces on the plot, located on different levels.

The extension gives the community a single, functional building with quality spaces. This building, which is alive all day, all year round serves as a catalyst for the dynamic life of the village.



**Fig. 1**  
External view of the  
West elevation.

**Fig. 2**  
External view of the  
South elevation.



**Fig. 3**  
Longitudinal and  
transversal sections.

**Fig. 4**  
Internal view of a  
classroom.

**Fig. 5**  
Internal view of the  
indoor courtyard.





**feld72**

# Educational Ensemble Terenten

**Location:**

Terenten/Terento, Alto Adige, Italy

**Chronology:**

2017

**Project category:**

Education

**Photos:**

Hertha Hurnaus



The idea of the educational ensemble originated from a study in 2005, which involved the local community to develop a holistic concept for Terenten. Originating from a 1970s building housing a school and kindergarten, the project evolved into a dynamic space that integrates these educational facilities with public spaces like the existing village library. Designed by feld72, the kindergarten, completed in 2010, and the school, renovated in 2017, prioritize sustainability and pedagogical innovation. The kindergarten's three buildings harmonize with the land-

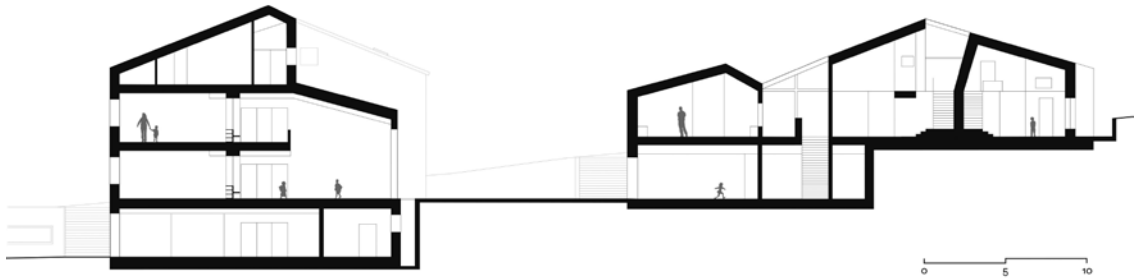
scape, creating seamless internal and external connections. The primary school maintains its original structure but reimagines it with clear volumes and new spaces for modern learning. Features include multifunctional Open Space in the attic and the library, located in the basement, that links the school to the village, fostering interaction.

Through minimal yet strategic construction, the ensemble activates existing resources, providing Terenten with a vibrant hub that opens itself to the village and vice versa – it becomes part of everyday life.



**Fig. 1**  
Kindergarten.

**Fig. 2**  
Street view:  
kindergarten and  
primary school.



**Fig. 3**  
Section: primary  
school and  
kindergarten.

**Fig. 4**  
Village library.

**Fig. 5**  
Primary school.



feld72

# Kindergarten Niederolang

**Location:**

Olang/Valdaora, Alto Adige, Italy

**Chronology:**

2016

**Project category:**

Education

**Photos:**

Hertha Hurnaus



The kindergarten in Olang/Valdaora blends tradition, modernity, and nature within the village structure. The building integrates into its surroundings while maintaining its own identity positioned near the parish church and cemetery chapel, the timber structure is enclosed by a solid wall, creating a protected retreat. The design reinterprets village boundaries, with the enclosing wall shifting between fence and boundary, merging with the context and framing distinct spaces. Located on the northern edge of the property, the compact building opens to a sunny, protected garden, of-

fering security and freedom for the children. The wooden walls warmly embrace the garden, while covered areas provide weather protection. The architecture integrates playfully with the playground, enhancing the traditional element of fencing. Inside, simplicity reigns with local timber fostering belonging. Group rooms are calm and adaptable, featuring niches and functional furniture for exploration and flexible spaces support diverse educational approaches. This kindergarten bridges tradition and modernity, offering a home for both the familiar and the exceptional.

**Fig. 1**  
Eastern view.

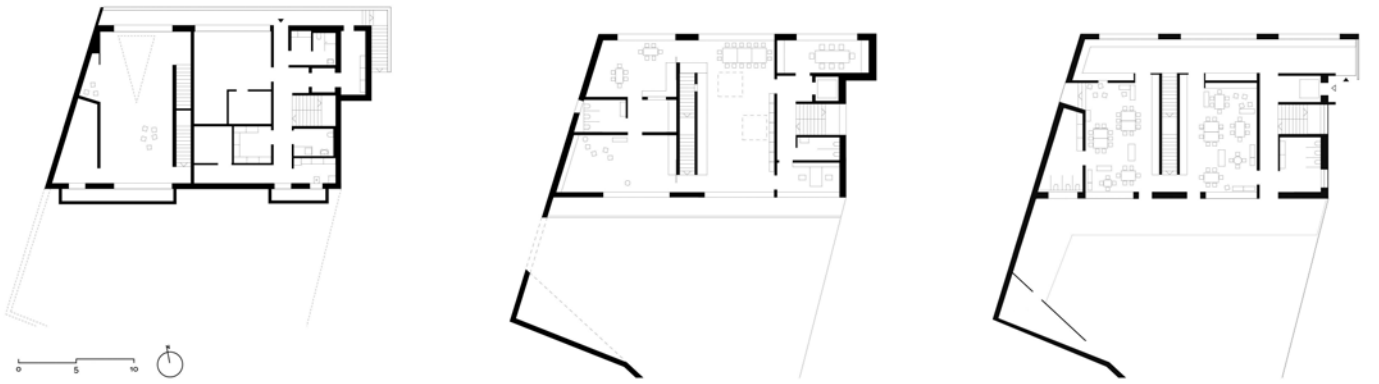
**Fig. 2**  
Southern view.

**Fig. 3**  
Western view.

**Fig. 4**  
Basement, ground  
and first floor plans.

**Fig. 5**  
View of the multi-  
functional room.







**Walter Pircher Architekt**

# Kindergarten Tscherms

**Location:**

Tscherms/Cermes, Alto Adige, Italy

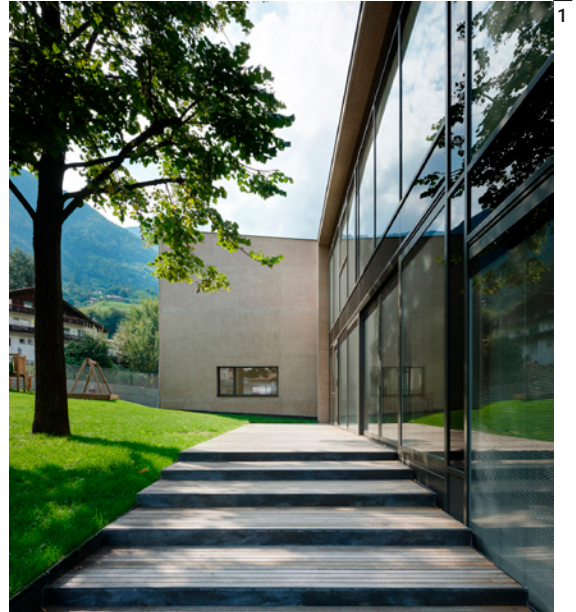
**Chronology:**

2012

**Project category:**

Education

**Photos:** Jürgen Eheim



The new kindergarten in Cermes, the winning project of an architectural competition, is divided into two structures along the northern boundary, shaping the spaces of the street, playground, and northern square. The taller structure runs parallel to the road, while the second aligns with neighbouring houses to the east, with the entrance hall connecting them. Both structures have fully glazed southern façades, while the other elevations are made of solid exposed concrete with selective openings, continuing seamlessly inside. The concrete's unique composition and hammered finish enhance its min-

eral character, integrating perfectly into the surroundings. The nearby church influences the materials, colour, and solid presence along the road. Interior materials distinguish spaces by function, transitioning from hard, cold materials in shared areas to warm, soft ones in private zones. Common areas use stone, bush-hammered concrete with skylights and open ceilings. Wood panelling and flooring define wardrobe vestibules and classrooms. Double-height classrooms face the southern playground, blending with the landscape, where mature trees were preserved during construction.

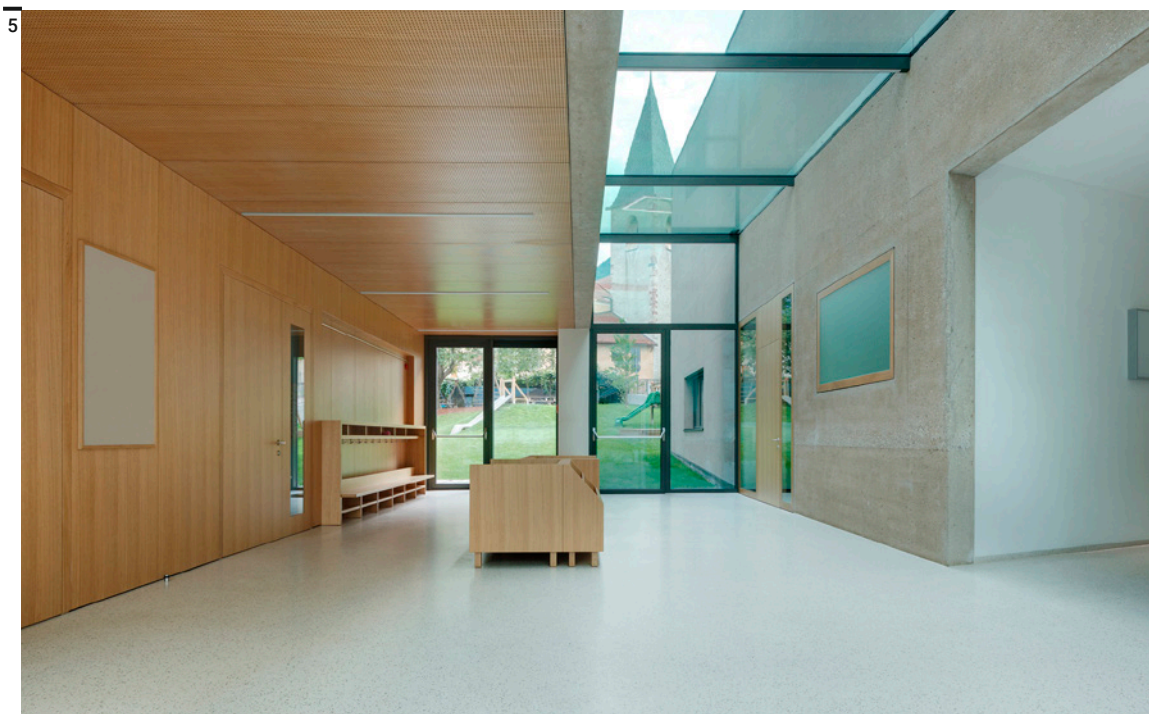
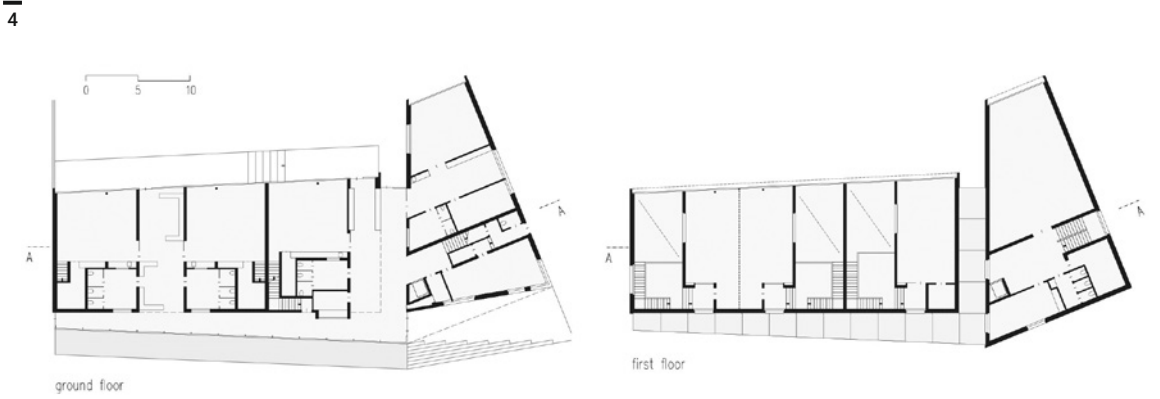
**Figs. 1-3**  
External view of the courtyard.

**Fig. 2**  
External view of the North elevation.

**Fig. 4**  
Ground and first floor plans.

**Fig. 5**  
Internal view of a distribution space.







**Pedevilla Architects**

# School in Rodeneck

**Location:**

Rodeneck/Rodengo, Alto Adige, Italy

**Chronology:**

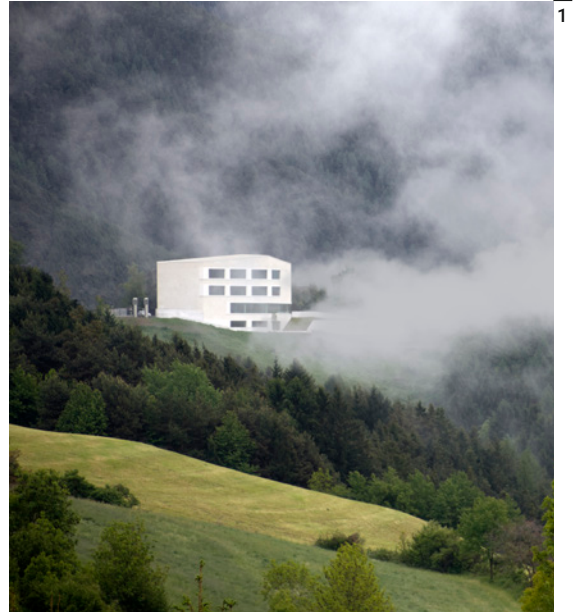
2012

**Project category:**

Education

**Photos:**

Gustav Willeit



The new elementary school is situated on the edge of a slope, clearly visible from the valley below. From a distance, the building appears simple and compact, with its façade and large windows contributing to its streamlined look.

The main entrance, located on the eastern side facing the village, offers a view of the valley through its transparent design. The steep slope allows for a semi-basement level that houses youth spaces and technical education rooms.

The ground floor contains the entrance and dining

hall, which can be combined to create a large event space. The upper two floors feature corridors and service areas on the village side, while classrooms and the teachers' lounge overlook the valley.

The material and colour scheme is simple and refined: rough plastered façades and cream-coloured interiors complement red rubber flooring in classrooms and yellow-painted surfaces in restrooms. This minimalist approach ensures a cohesive and functional design that integrates seamlessly into the surrounding landscape.



**Fig. 1**

External view of West elevation.

**Fig. 2**

External view of the building from South-West.

**Fig. 3**

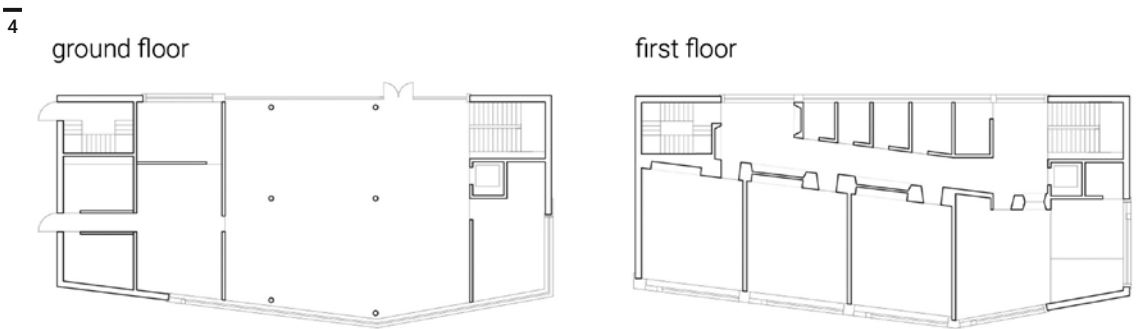
Internal view of one classroom.

**Fig. 4**

Ground and first floor plans.

**Fig. 5**

Internal view of the music classroom.





**ES-arch**  
**enricoscaramelliniarchitetto**

# Spluga Climbing Gym

**Location:**

Campodolcino, Valchiavenna, Italy

**Chronology:**

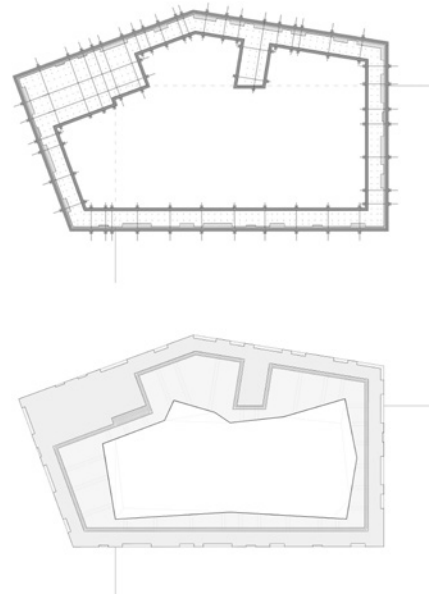
2023

**Project category:**

Education

**Photos:**

Marcello Mariana Fotografia



The project engages with the landscape, focusing on planimetric and volumetric configurations. Despite its modest scale, it forms strong ties with its surroundings, rock, forest, and trees. A figure-ground connection links it to the woods. Inclined façades of varying sizes encourage lateral perception, revealing the structure only partially; also approaching via paths emphasizes this oblique view. Its polygonal plan and sloped roof section evoke a rocky outcrop: a massive, vertical boulder. Tall nearby trees reference the building's height, their seasonal foliage enhancing the interplay with nature.

This compact yet striking structure transforms basic construction into timeless architecture, evoking rock-like forms and bold geometries. Built entirely of pigmented cast-in-place concrete, its five pours are marked by horizontal bands. The flush base contrasts with upper levels featuring recessed patterns. Sand-blasted concrete shifts colour with light and weather. To the north, a convex angle recalls a cliff. Sculptural dynamics emerge through recessed surfaces and reflective metal inserts, while a large south-facing window lights the interior and mirrors the sky's changing hues.

**Fig. 1**  
 Construction plan with formwork and reinforcements and final plan with finishes and climbing panels.

**Fig. 2**  
 External view of the former gym and the new intervention.

**Figs. 3-4**  
 External view.

**Fig. 5**  
 Detail of the basement.

**Fig. 6**  
 Internal view of the climbing gym.









**Andrea D’Affronto  
and Carlos Latorre**

# New gym for the primary school

**Location:**

Nals/Nalles, Alto Adige, Italy

**Chronology:**

2017

**Project category:**

Education

**Photos:**

Renè Riller



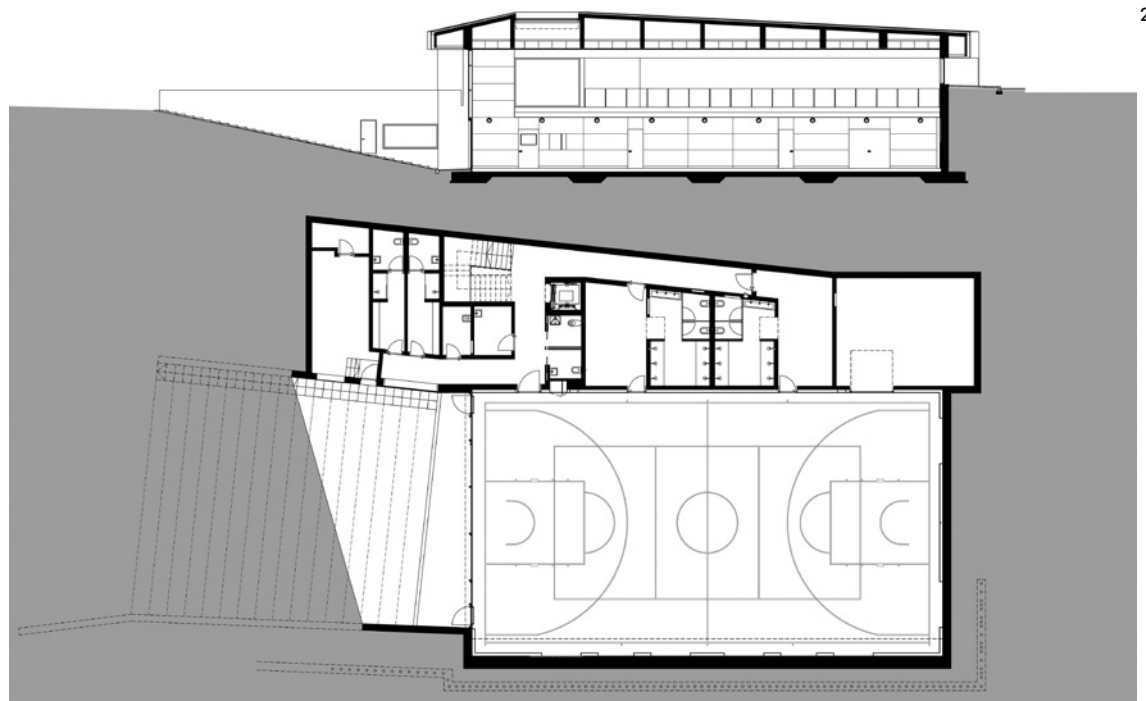
Located in the small town of Nalles at the start of the “Strada del Vino”, the project enhances the area’s public ensemble, which includes the St. Ulrich church, cemetery, and nearby school.

The gymnasium integrates into the sloping terrain near the cemetery, appearing as a porphyry monolith shaped by tectonic movements, blending transparency and material solidity.

The gym is part of a larger plan involving school expansion, an underground garage, and a cemetery extension, but currently only the gym is completed. The design minimizes visual impact while

maintaining functional visibility, connecting the village to the site via extended pathways. A central open space enhances the ensemble’s urban quality, offering intimate areas aligned with local traditions.

The gym features a massive, textured porphyry shell with dynamic transparency through large glass facades and light cuts, ensuring natural illumination. The roof, echoing nearby architecture, incorporates a skylight that channels light through a concrete staircase core, creating an interplay of vibrant surfaces that evolve with time and season.



**Fig. 1**  
View of the  
courtyard by the  
staircase.

**Fig. 2**  
Ground floor plan  
and section.

3



4



**Fig. 3**  
External view of  
the South and East  
elevations.

**Fig. 4**  
Internal view of the  
gym.